



LOUVER PANELS

Get Free Sample Before Buy

Corporate Office

📍 Plot No. 1, VPO - Bakkarwala, Near MCD, Girls Primary School, New Delhi - 110041, INDIA. Toll

📞 Free No. 1800-2700-489 📞 +91-78276-78276 📞 +91-9555-338-248 (International Inquiry)

www.sehrawatbrothers.com sales@sehrawatbrothers.com

ALSO AVAILABLE ONLINE AT:

amazon.com snapdeal flipkart.com SHOPCLUES.COM ebay Indiamart MY INTERIOR FACTORY

WALL PANELS

BELLACASA

MY STORE

3D Wall Panels

mall

Lavanya Doors

Aibly WPC BOARD Stronger than wood Use it your way.

3D Wall Panel JALI CUTTING



Louver Panels

HDHMR is made by combining fibre chips, forest wood waste through a homogeneous construction process. These fibre chips are pressed together to form a single layer, removing small wood content to form a robust higher density board. The density of the product is better than other products available in the market.

HDHMR Louver Product Advantages

1. Tougher than plywood
2. Highly water-resistant: Can be used in highly moist areas and climate
3. Hard Wood used for higher density of product (made from eucalyptus wood)
4. No Core Gaps – Ideal routable substrate with sharp cut & routed edges
5. Uniform density gradient and Compact core – Enhanced screw and withdrawal strength
6. Special Glue being used to make it Water Resistant Product as per Indian climate conditions.
7. Ready & Smooth Surface – Polish with exotic colours of choices. Absorbs less paint in the painting process thus saves paint cost also.
8. Innovative Application – Enhanced aesthetic value addition to finished product.
9. Cost-Effective Paneling Solution

Termite, Borer, Fungus, Water Resistant, Environmental Friendly.

WPC frame Advantages:

- Best to stand with high moisture and humidity level
- Better machinability
- Best to use as exterior grade material
- High impact strength
- 100% environs friendly product
- High tensile strength
- Can be processed like natural wood and solid wood
- Rough and tough material for all weather conditions
- High load bearing capacity
- Corrosion resistance
- High screw holding capacity
- High abrasive strength
- Non toxic and borer free

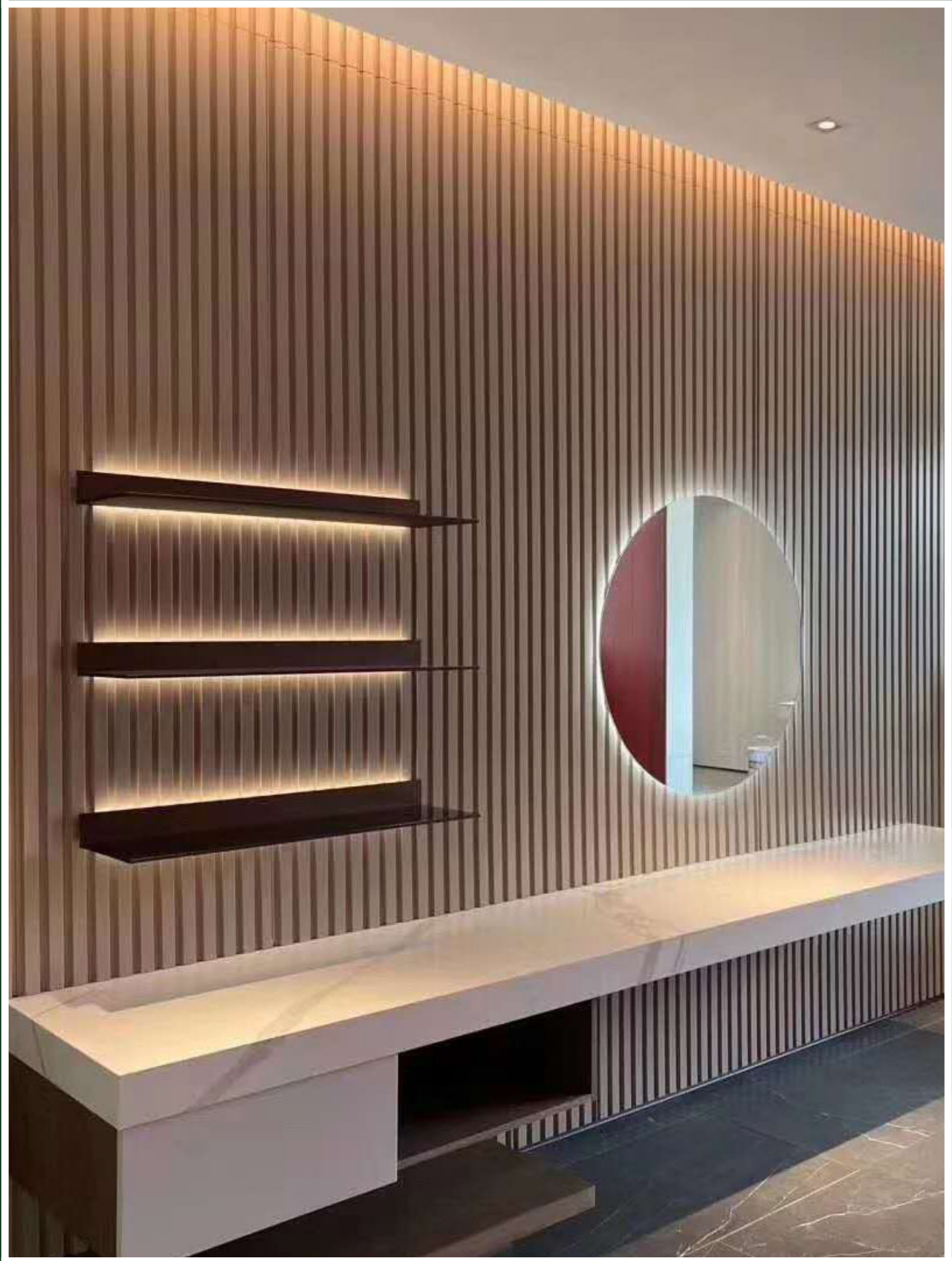
Louver Panels



Louver Panels



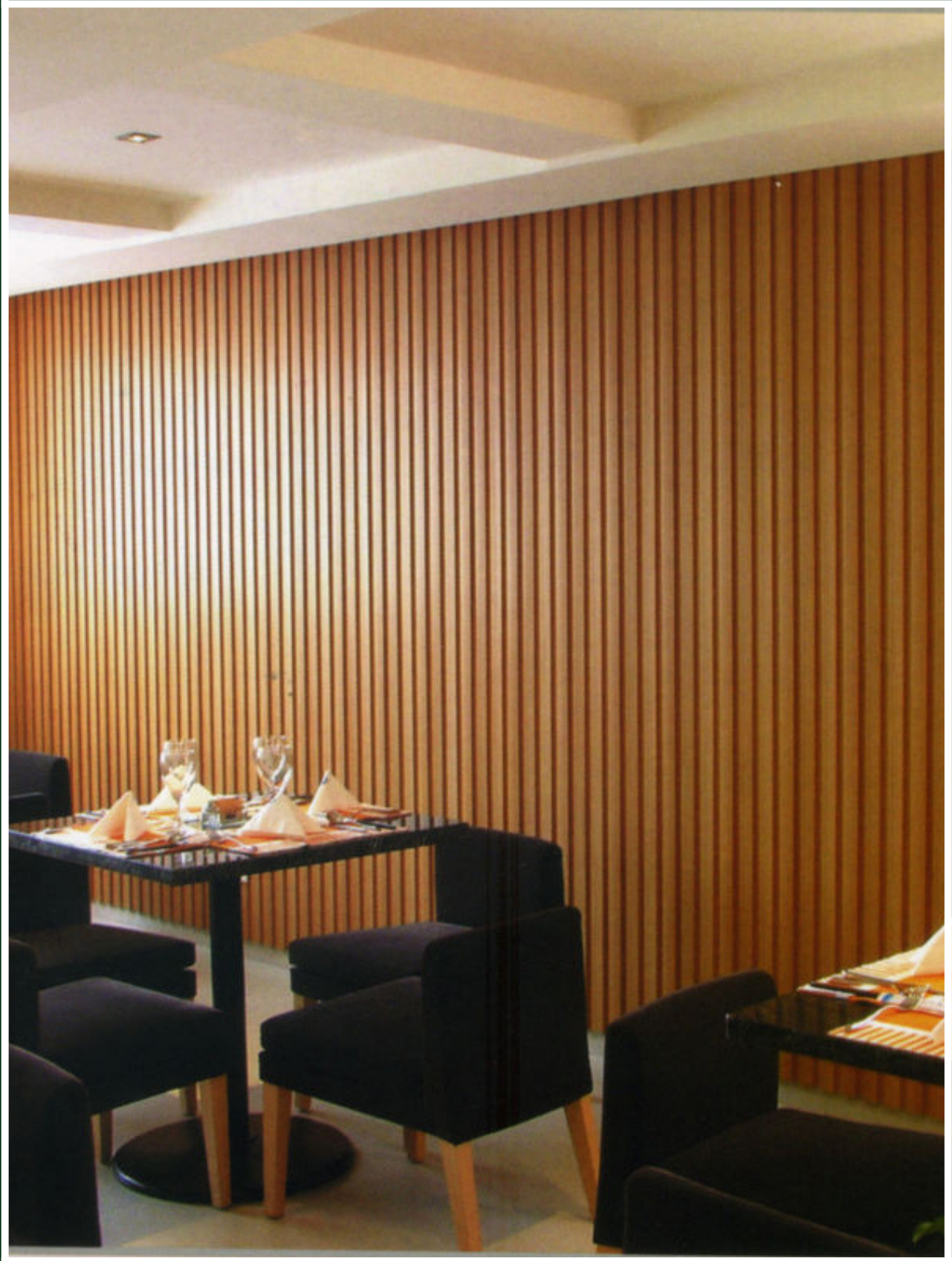
Louver Panels



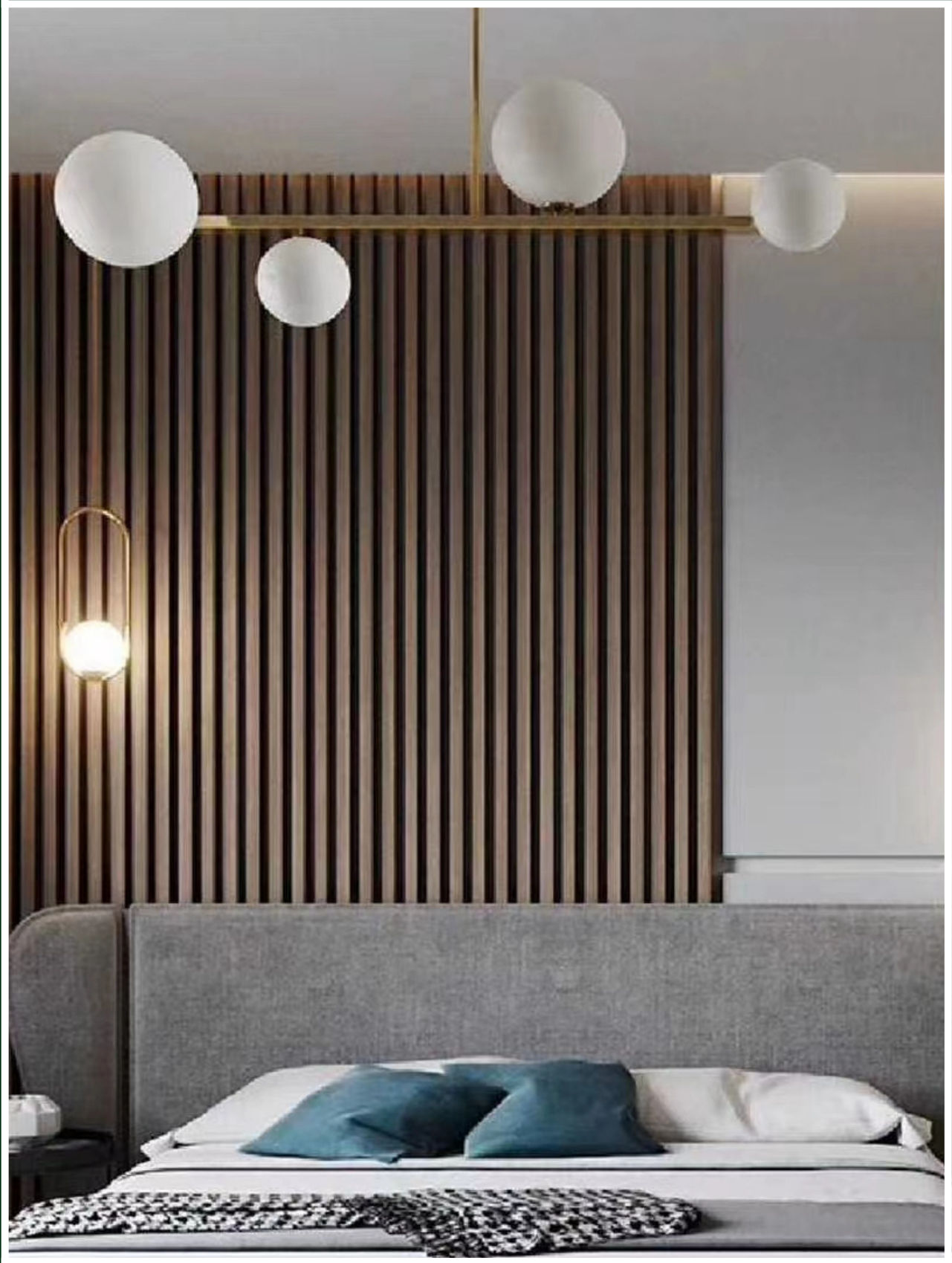
Louver Panels



Louver Panels



Louver Panels



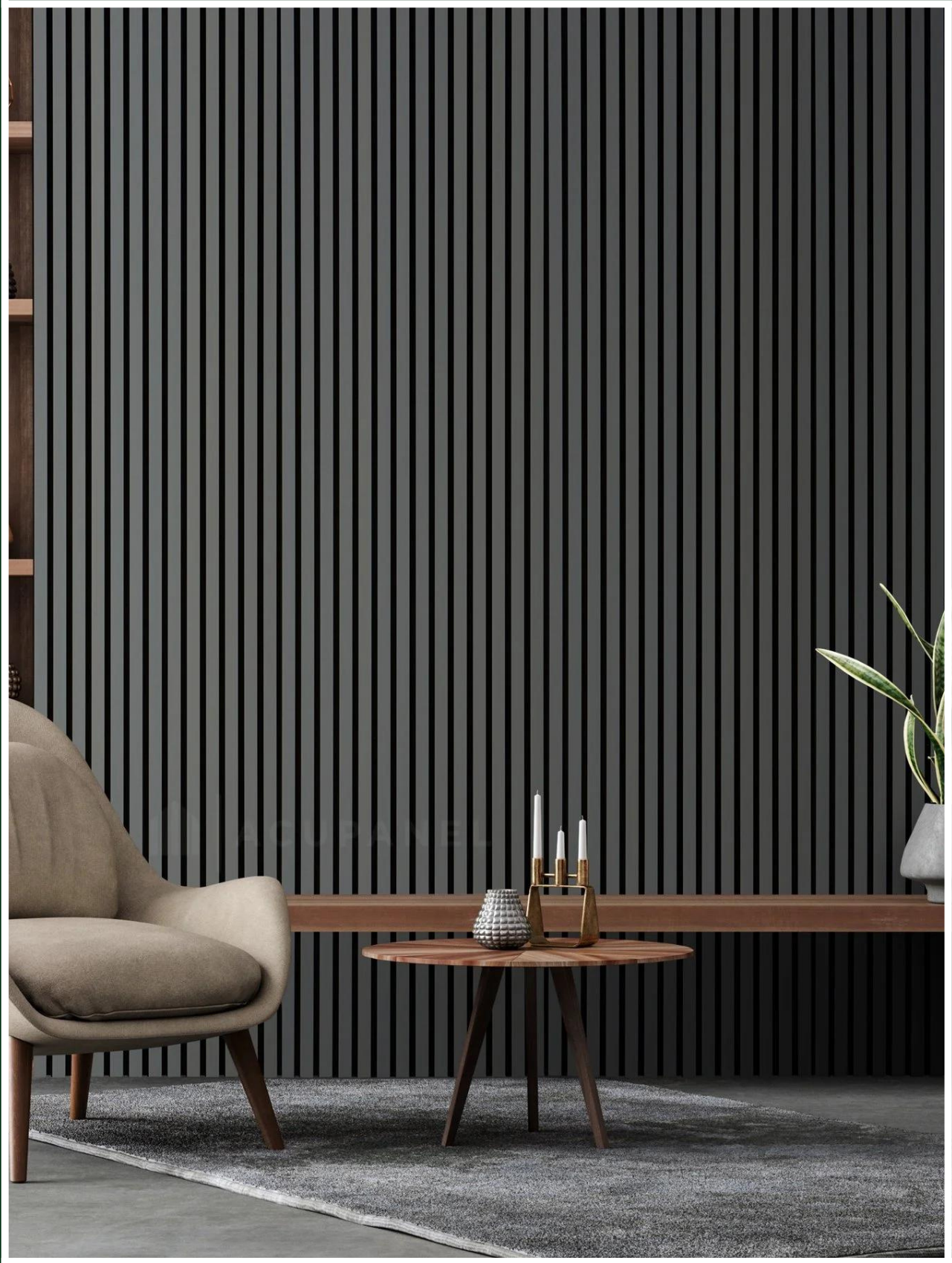
Louver Panels



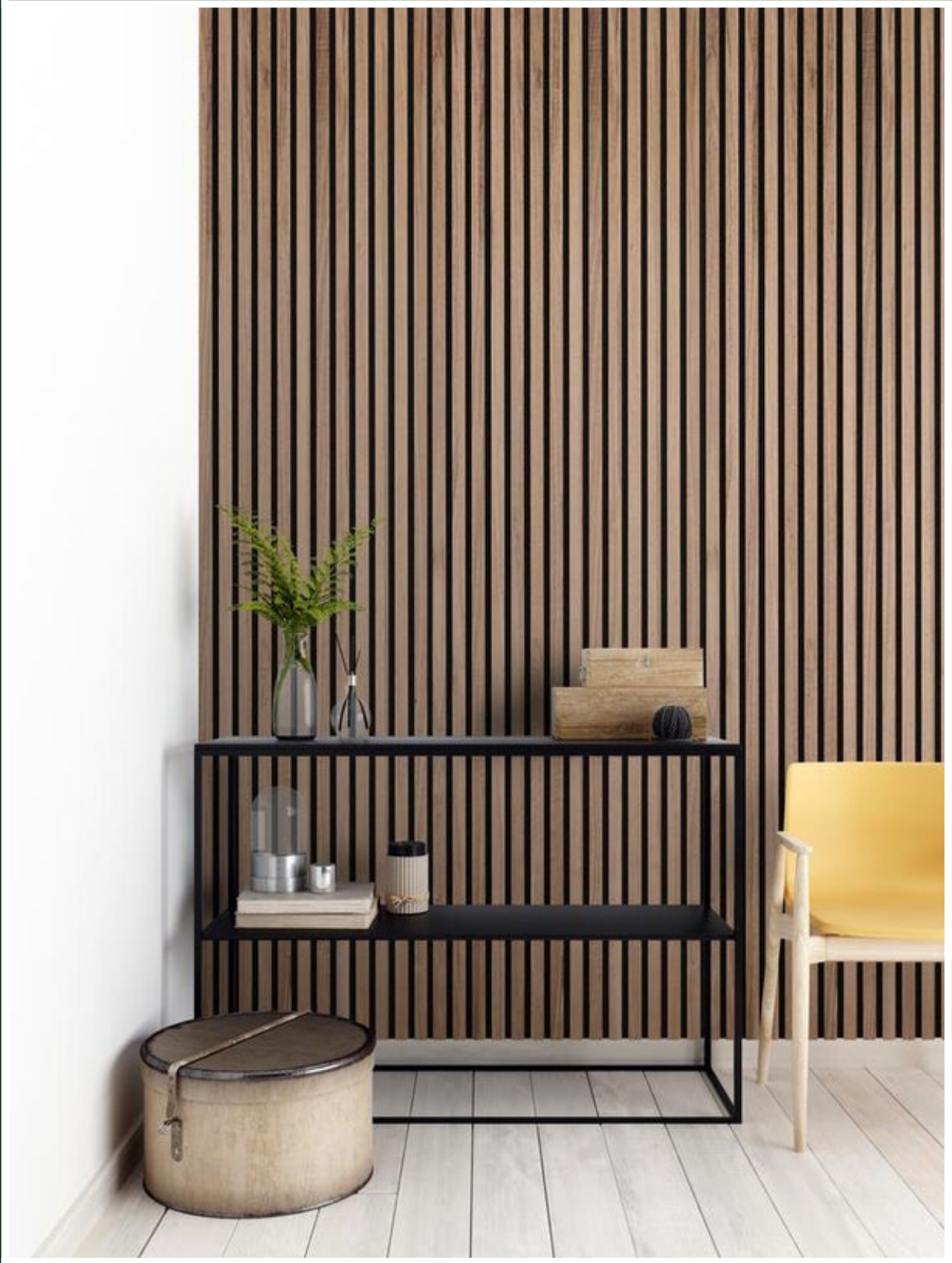
Louver Panels



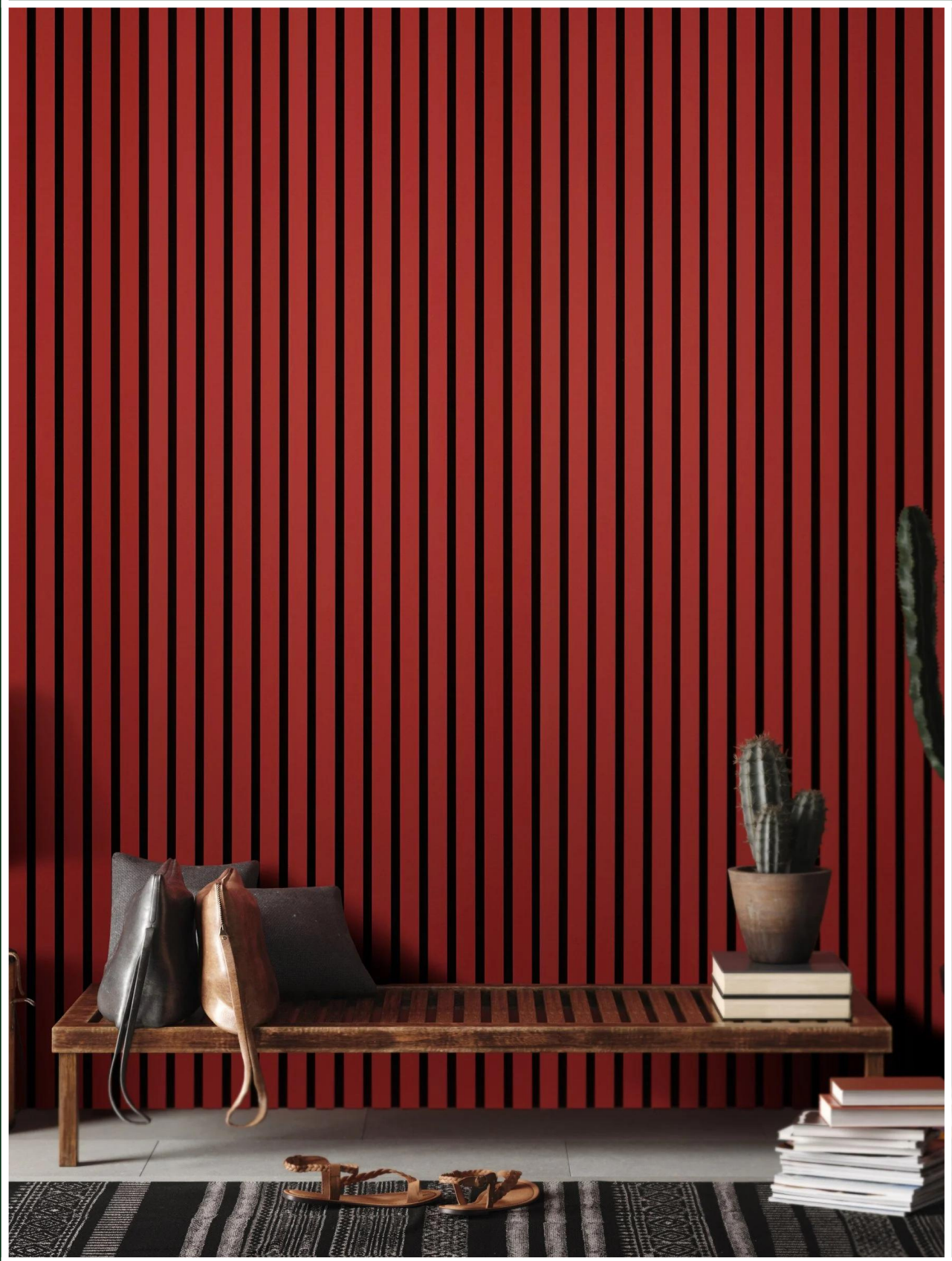
Louver Panels



Louver Panels



Louver Panels



Louver Panels



Louver Panels



Louver Panels



Louver Panels



Louver Panels



6 Advantages, Improve Household Life



Temp Insulation

Save electricity



Anti-moisture

Protect Wall



Insulation & Intallation in 1 step

Different color and DIY



Easy Installation

Men and women, old young can do it



SEHRAWAT BROTHERS
INTERIOR AND DECORATORS PVT. LTD.