



**SEHRAWAT BROTHERS**  
INTERIOR AND DECORATORS PVT. LTD.

# BGP WALL PANEL

**Attractive & low maintenance wall coverings**

**Get Free Sample Before Buy**

**Corporate Office**

Plot No. 1, VPO - Bakkarwala, Near MCD, Girls Primary School, New Delhi - 110041, INDIA.

Toll Free No. 1800-2700-489 +91-78276-78276 +91-9555-338-248 (International Inquiry)

[www.sehrawatbrothers.com](http://www.sehrawatbrothers.com) [sales@sehrawatbrothers.com](mailto:sales@sehrawatbrothers.com)

**ALSO AVAILABLE ONLINE AT:**

[amazon.com](http://amazon.com) [snapdeal](http://snapdeal.com) [flipkart.com](http://flipkart.com) [SHOPCLUES.COM](http://shopclues.com) [ebay](http://ebay.com) [paytm](http://paytm.com) [BE](http://be.in)

**MY WALL PANELS**

**MY STORE**

**3D**  
Wall Panels

**Lavanya**  
Floors

**Ablu**  
WPC BOARD  
Stronger than wood  
Use in your way

**3D**  
Wall Panel  
JALI CUTTING







SB\_4001



SB\_4002



SB\_4003



SB\_4004



SB\_4005



SB\_4006



SB\_4007



SB\_4008



SB\_4009



SB\_4010



SB\_4011



SB\_4012



SB\_4013



SB\_4014



SB\_4015



SB\_4016



SB\_4017



SB\_4018



SB\_4019



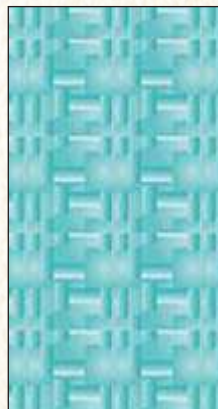
SB\_4020



SB\_4021



SB\_4022

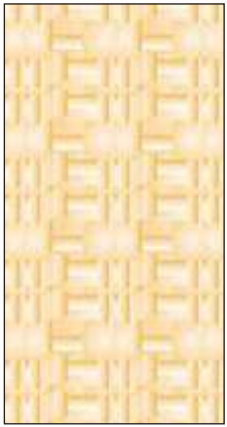


SB\_4023



SB\_4024

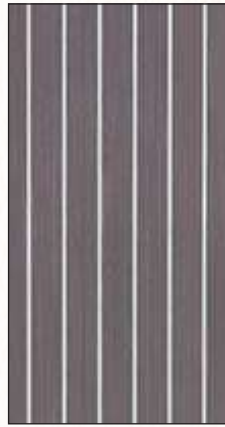




SB\_4025



SB\_4026



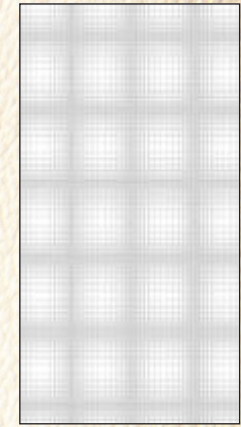
SB\_4027



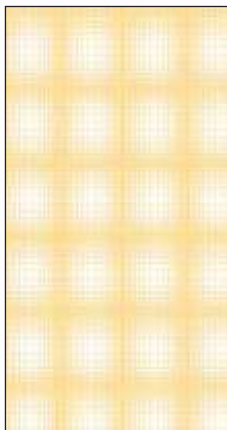
SB\_4028



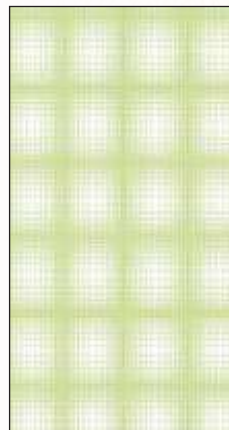
SB\_4029



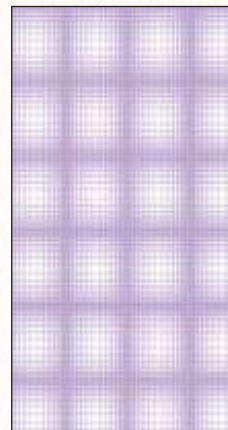
SB\_4030



SB\_4031



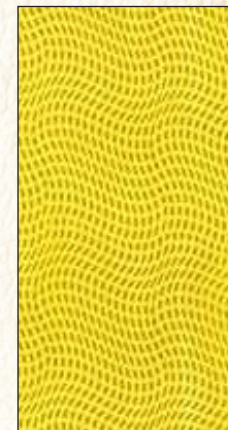
SB\_4032



SB\_4033



SB\_4034



SB\_4035

1. Take the size of wall.
2. Scrape the wall.
3. Cut the sheet accordingly to size of the wall.
4. Apply special rubber base adhesive (SG 1000 of 3M / SP5 of Pidilite ) on sheet as well as on wall. Allow it to dry for 5-10 minutes.
5. Put the sheet on wall and apply pressure from one end to the other gradually, so that no air bubble remains inside.
6. Kindly note that when you use 2 sheets besides one another maintain a gap of 4mm for sealant to be filled in.
7. Hammer the sheet by placing a plain wooden plank as shown in figure for fixing.
8. Put white tape on all borders of the sheet & the wall where the sheet is put up in such a way that silicon is filled in between the portion of both the tapes. This is used as sealant which serves as a frame of the sheet on the wall.
9. Then remove the tape simultaneously as you fill silicon in the gaps of the tape.
10. And the fire proof , termite proof, long lasting wall in your favourite design is ready in few hours.





# INSTALLATION GUIDE

